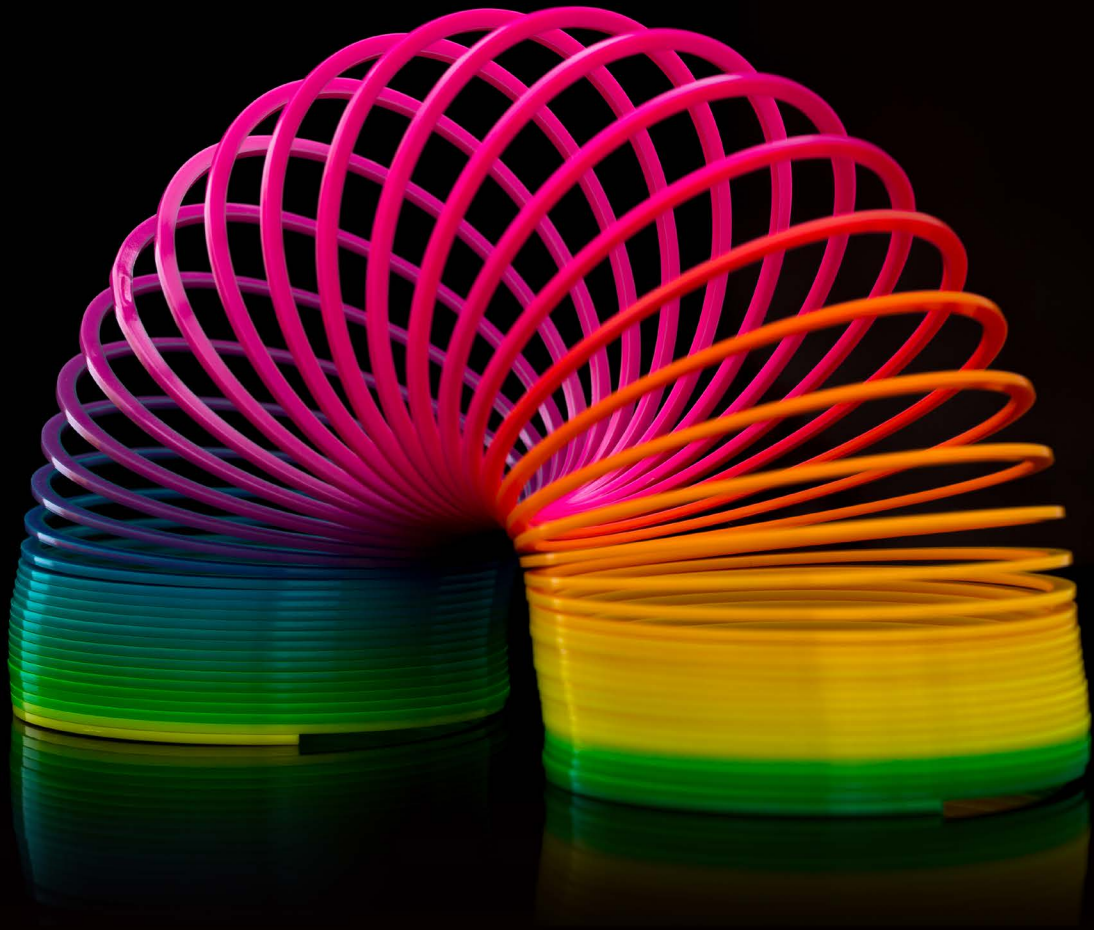


RESPONSIBLE



Russell Investments Australian Responsible Investment ETF

Invest in what matters most to you.



Introducing RARI

Providing you access to ESG investing

The Russell Investments Australian Responsible Investment ETF provides investors with a simple, cost-effective and transparent means of accessing an environmental, social, and governance (ESG) enhanced portfolio of Australian shares.

At Russell Investments, we consider true responsible investing as a long-term approach that accounts for a wide-range of complex factors. We believe responsible investing and performance can be complementary. Our responsible investing approach aims to capture the right exposure without jeopardising return.

Holistic ESG integration

PORTFOLIO MANAGEMENT	ESG RESEARCH AND METRICS
We research and rank thousands of investment products on their ability to add value to portfolios, and integrate an ESG score when assessing the products' manager. All manager reviews include an assessment of how ESG is implemented within the investment managers' policy, process, awareness and offering.	Our research actively looks towards the future. To understand how best to add long-term value for clients, we evaluate manager products both on an individual basis and an industry basis. We advocate for best practices and continually assess our own product offerings in these areas.
ACTIVE OWNERSHIP	CULTURE AND PROCESS
We believe voting is a part of a share's value-creation process and aim to improve the long-term investment outcomes of assets through our active stewardship and voting policy. As stewards, we monitor the effectiveness of company management on an ongoing basis. As share owners, we aim to exert influence on corporate governance, social and environmental practices through our votes.	We provide education throughout the year and are involved with advising governments and industry bodies across the world. As part of this we are signatories to the UN- supported PRI and members of numerous industry associations.

All Russell Investments solutions, funds and services take ESG factors into consideration

We bring a carefully-considered, integrated approach to responsible investing



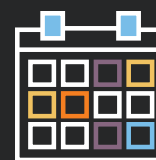
FULLY INTEGRATED

We believe responsible investing is intelligent investing. As a result, we have embedded responsible investing practices and ESG beliefs into our firm-wide practices and processes, including portfolio management. In addition, our responsible investing and ESG experts are integrated throughout business units, spanning functions and regions.



SEARCHING BEYOND THE STANDARD

Our investment approach goes beyond standard exclusions to identify asset characteristics that are most relevant to individual investment and the overall portfolio. The focus is on exposures that are sustainable as well as material to your organisation's investment goals.



ACTIVELY LOOKING TO THE FUTURE

As the focus of sustainability best practice shifts over time, we stay committed to adapting our funds to suit the changing global landscape. You can be sure your capital remains invested in the latest sustainability strategies, without continually changing funds.

Russell Australia ESG High Dividend Index

RARI is designed to track the performance of the Russell Australia ESG High Dividend Index. The Index takes into account ESG considerations in its selection process and eligibility criteria (see the PDS for more details), which includes:

- **Negative or exclusionary screening:** The Index seeks to exclude investments in companies that are inconsistent with widely recognised responsible investment considerations as represented in Australia.
- **Positive screening:** The Index is weighted towards companies that exhibit positive ESG characteristics

How it works

RARI seeks to track the performance of a custom-built, smart-beta index (the Russell Australia ESG High Dividend Index) by investing predominantly in Australian shares and trusts listed on the ASX. The index is weighted to companies that demonstrate positive ESG characteristics after negatively screening for companies that have a significant involvement in a range of activities deemed inconsistent with widely recognised responsible investment objectives. In addition, the portfolio is weighted to improve expected future income (including franking credits).

RARI potential benefits

- Exposure to a portfolio that focuses on Australian companies with positive ESG characteristics,
- Improvement in expected future income (including franking credits),
- Flexibility to buy and sell investments on the ASX,
- Full daily transparency of underlying holdings,
- Effective cash flow and liquidity management for responsible investment-focused institutional portfolios, and
- An 'income protection feature' designed to ensure that the income entitled to existing RARI investors is not diluted by new investors.¹

Fund facts

ASX ticker	RARI
iNAV ticker	YRAR
Bloomberg ticker	RAESGDT
Management cost (p.a.)	0.45%
Distribution frequency	Semi Annually

A / A+

By the UN PRI annual assessment²

2009

Became a UN PRI signatory

94,598

Proxy votes made at 9,547 meetings in 2020³

Signatory of:



¹ It should be noted that franking credits may be diluted by new.

² Russell Investments received an A or A+ rating across all categories evaluated in 2020. Russell Investments' Full 2020 PRI Assessment and Transparency Report as well as the PRI methodology can be found at russellinvestments.com/au/about-us/responsible-investing.

³ Source: Russell Investments' Active ownership: 2020 Proxy and engagement report.

RARI key features

Designed to provide a simple, cost effective and transparent means of accessing an ESG enhanced portfolio.

- Companies are excluded from the Index universe based on specific criteria such as revenue generated from certain activities including the manufacturing and/or distribution of tobacco, alcohol, gambling, pornography and armaments. Companies which have fossil fuel reserves or are involved in the extraction or burning of fossil fuels are also excluded. In addition, companies which lag industry peers in approaching ESG risk may also be excluded.
- Company ratings and active weights in the Index are determined by two key factors. Each company in the investment universe is assigned a score based on two criteria:
 - (1) Material ESG Score⁴ and
 - (2) an income score (calculated per the existing Russell Australia High Dividend Index methodology).
- To meet the needs of Australian investors, the index also seeks to improve expected future income (including franking credits) after meeting its desired responsible investment objectives.
- RARI is expected to invest in up to 100 listed companies providing a broadly representative portfolio of Australian listed companies.

⁴ Using Russell Investments proprietary material ESG scores.

There are a number of ways you can invest in Russell Investments ETFs. You can:

Contact your financial adviser

Contact your full service broker

Open an account with a non-advisory or online broker

If you have a question about your Russell Investments ETF holding please contact ComputerShare by calling **1800 775 383** or visit the ComputerShare website.

For all other enquiries you can contact us by emailing **ETFenquiries@russellinvestments.com** or call the helpline on **1800 775 383**.

[russellinvestments.com.au](https://www.russellinvestments.com.au)

IMPORTANT INFORMATION

Issued by Russell Investment Management Ltd ABN 53 068 338 974, AFS License No 247185 (RIM). This communication provides general information only and has not been prepared having regard to your objectives, financial situation or needs. Before making an investment decision, you need to consider whether this information is appropriate to your objectives, financial situation and needs. Any potential investor should consider the latest Product Disclosure Statement (PDS) for the Russell Investments Australian Responsible Investment ETF (ETF) in deciding whether to acquire, or to continue to hold, units in the ETF. A copy of the PDS can be obtained by visiting [russellinvestments.com.au/etfs](https://www.russellinvestments.com.au/etfs). Only persons who have been authorised as trading participants under the Australian Securities Exchange (ASX) Operating Rules can apply for units in the ETF through the PDS. Investors who are not Authorised Participants but are looking to acquire units in the ETF cannot invest through the PDS, but may purchase units on the ASX. Please consult your stockbroker or financial adviser. Performance data relating to indexes does not take into account fees, charges or taxes and is not in any way an indicator of the net return to you as an investor. Indexes are unmanaged and cannot be invested in directly. Neither the performance of the fund nor the repayment of capital or any income is guaranteed by RIM. Past performance is not a reliable indicator of future performance. The Russell Investments Australian Responsible Investment ETF is not in any way sponsored, endorsed, sold or promoted by Russell or the London Stock Exchange Group companies ("LSEG") (together the "Licensor Parties") and none of the Licensor Parties make any claim, prediction, warranty or representation whatsoever, expressly or impliedly, either as to (i) the results to be obtained from the use of the Index (upon which the Russell Investments Australian Responsible Investment ETF is based), (ii) the figure at which the Index is said to stand at any particular time on any particular day or otherwise, or (iii) the suitability of the Index for the purpose to which it is being put in connection with the Russell Investments Australian Responsible Investment ETF. None of the Licensor Parties have provided or will provide any financial or investment advice or recommendation in relation to the Index to Russell Investment Management Ltd or to its clients. The Index is calculated by Russell or its agent. None of the Licensor Parties shall be (a) liable (whether in negligence or otherwise) to any person for any error in the Index or (b) under any obligation to advise any person of any error therein.