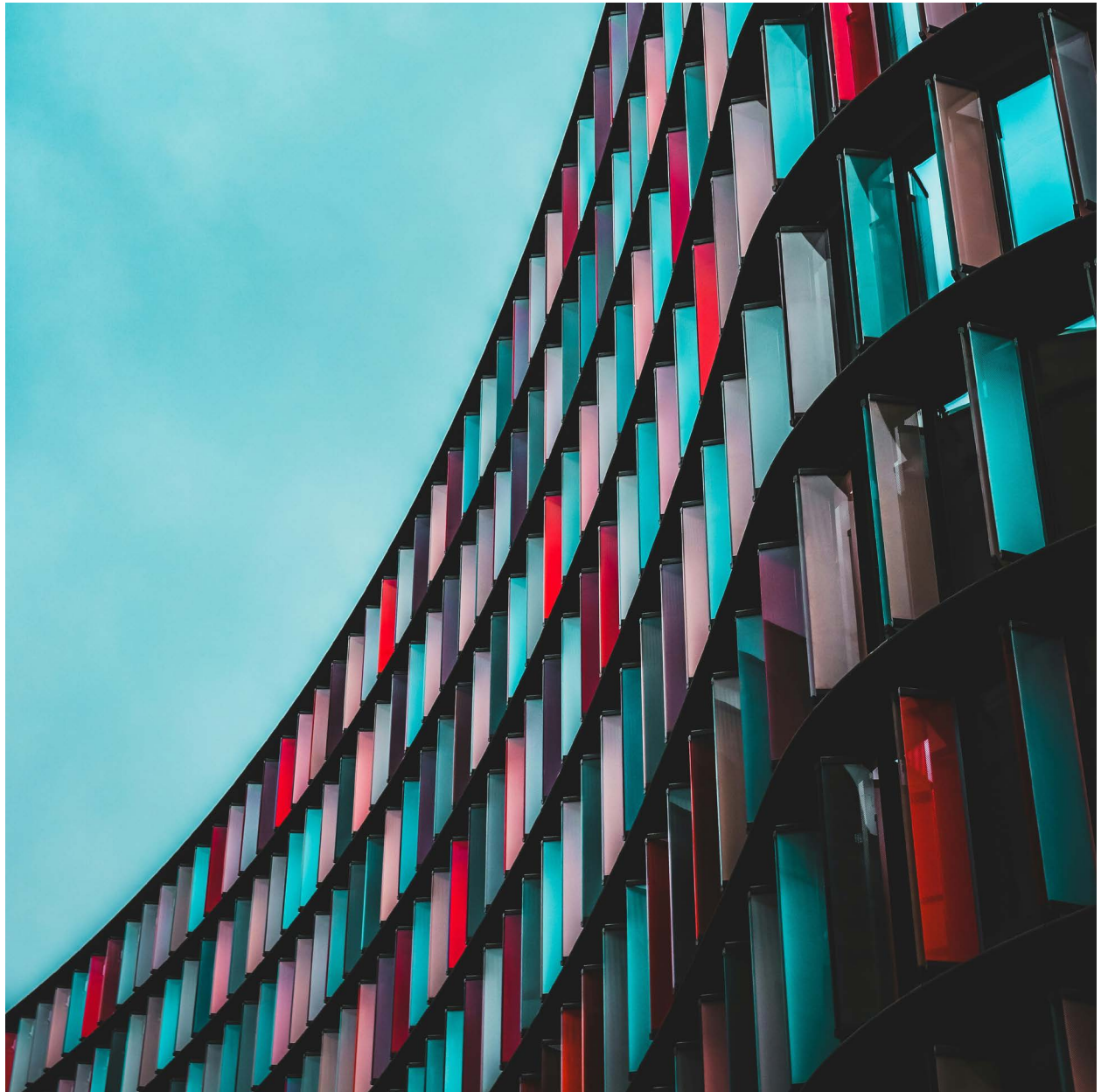


# EQUITY FACTOR REPORT

Q4 — 2023



RESEARCH

# Growth strategies rally on the prospect of lower interest rates

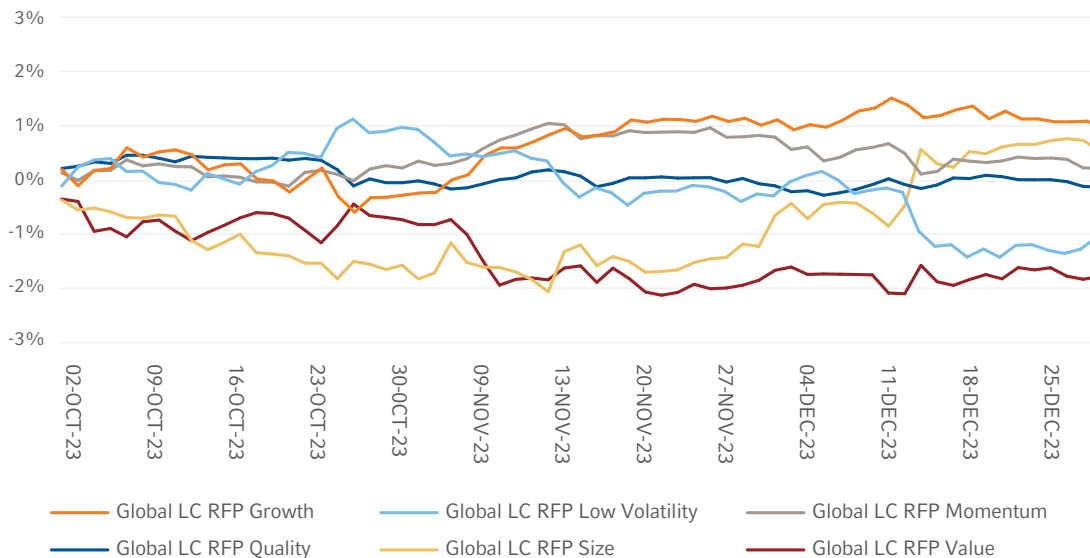
## OVERVIEW

Buoyed by the prospect of lower interest rates, global markets in Q4 2023 were characterised by a rally in technology companies, with the MSCI ACWI Index gaining by a robust 11.2% in the fourth quarter. During the quarter, investors became increasingly confident that inflation was no longer a threat and that lower interest rates were on the horizon. As the quarter progressed, and the prospect of a U.S. Federal Reserve (Fed) pivot took hold, technology stocks led by the *Magnificent Seven* rallied into the end of the quarter. Energy stocks, which were among the best performers in Q3, lagged in Q4. The MSCI Emerging Markets Index gained less (+7.9%) than the U.S. and MSCI World ex-U.S. Indices (+12% and +10.6%, respectively).

When considering Russell Investments' factor portfolios (RFPs), the Global Large Cap Growth, Momentum and Size outperformed the MSCI ACWI, with positive excess returns of +1%, +0.2%, +0.6%, respectively. Conversely, the Global Large Cap Value portfolio underperformed by -1.8%, along with Low Volatility, with an excess return of -1%. The Global Large Cap Quality portfolio remained flat for the quarter.

**Figure 1: Cumulative excess returns for Global Russell Investments Portfolios vs. MSCI ACWI**

(10/02/2023-12/29/2023)



Source: Russell Investments and MSCI

## FACTOR PERFORMANCE

### GLOBAL RUSSELL INVESTMENTS FACTOR PORTFOLIOS' PERFORMANCE DYNAMICS

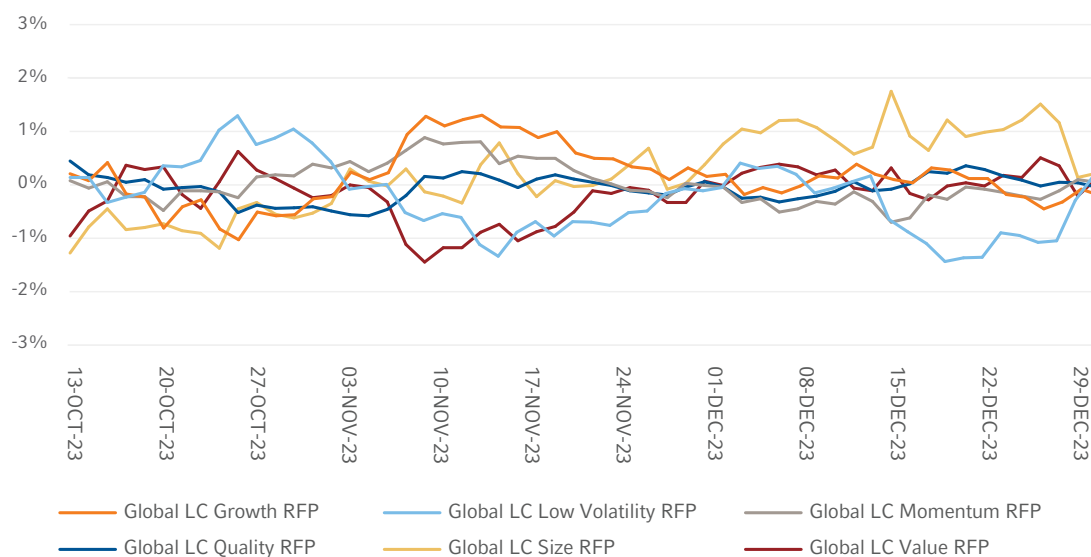
The performance dispersion among Global Russell Factor Portfolios (RFPs) this quarter was quite minimal, with a slight uptick noted in the first half of November and toward the end of December. During November, Value and Growth diverged, with Growth outperforming Value by +2%. The size factor had a strong reversal, underperforming in October and flipping that trend in November and December. It was the opposite for Low Volatility, which outperformed early in the quarter and then gave up those gains as the quarter progressed. Momentum and Quality had the least amount of dispersion through the quarter.

## PERFORMANCE DYNAMICS

The performance dispersion among Global Russell Factor Portfolios this quarter was quite minimal, with a slight uptick noted in the first half of November and the last half of December. During that period, Value and Growth diverged with Growth outperforming Value by +2%.

**Figure 2: 10-Day rolling excess returns for Global RFPs vs. MSCI ACWI**

(10/02/2023-12/29/2023)

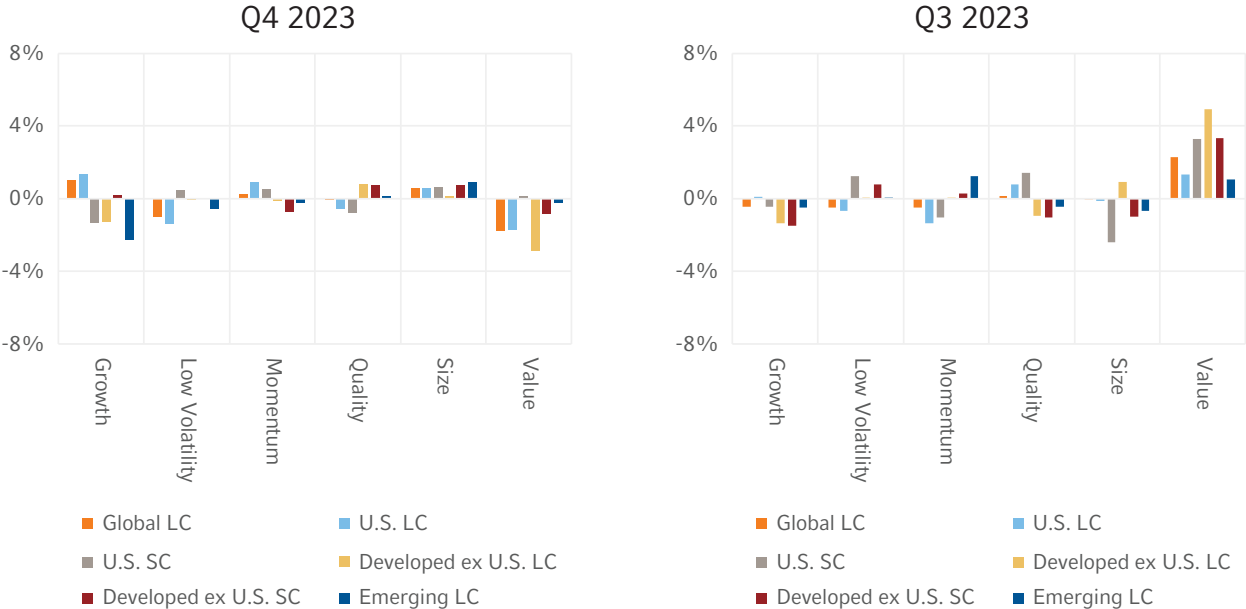


Source: Russell Investments and MSCI

# RUSSELL INVESTMENTS FACTOR PORTFOLIOS' PERFORMANCE ACROSS REGIONS

In the fourth quarter of 2023, the performance of the factor portfolios deviated more by regions than in the prior quarter. The Value factor underperformed across all regions except in U.S. Small Cap, which had a small outperformance of 0.1%. The Size factor had the most consistency of outperformance across all regions. The Global Growth factor outperformance of 1% was largely driven by U.S. Large Cap outperforming by 1.4%, while Developed ex-U.S. and Emerging Markets underperformed (-1.3% and -2.3%, respectively). The performance of Low Volatility, Momentum and Quality was mixed in terms of direction, but Low Volatility had a higher dispersion than Momentum and Quality. The strongest performance among factors was seen in U.S. Large Cap, where Growth and Momentum outperformed by 1.4% and 0.9%, respectively. The weakest performance among factors was in Developed ex-U.S. Large Cap, where the Value factor underperformed by -2.9%.

**Figure 3: Excess returns of RFPs vs. corresponding benchmarks (Q4 2023 and Q3 2023)**



Source: Russell Investments; FTSE Russell; MSCI

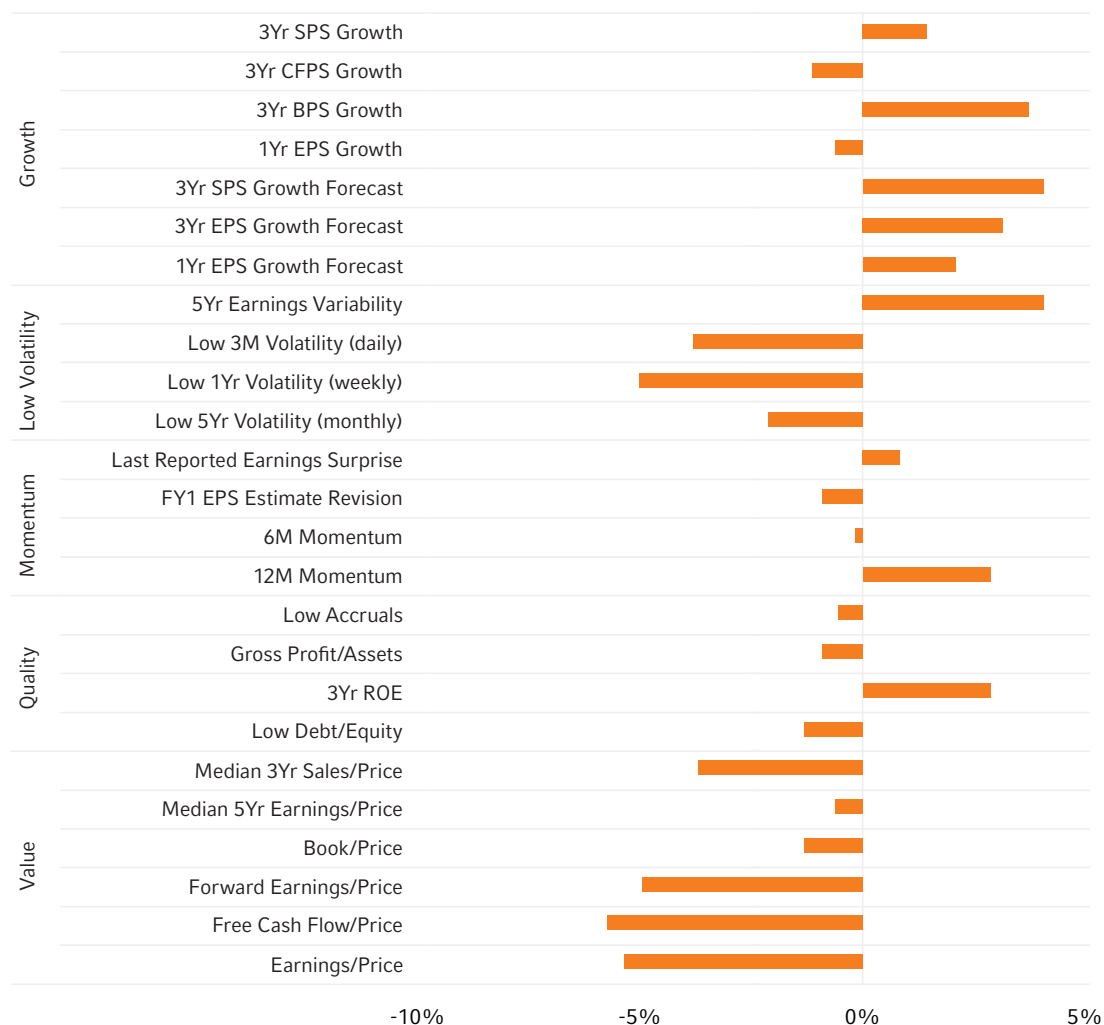
## PERFORMANCE OF SUBFACTORS IN THE GLOBAL UNIVERSE

Figure 4 below illustrates the performance of various subfactors in the MSCI ACWI universe for the last quarter, represented by top minus bottom quintile portfolios<sup>1</sup>. All Value subfactors underperformed in Q4 while most Low Volatility subfactors underperformed. Earnings Variability was the lone exception, with most of the outperformance coming in October. The performance of the remaining subfactors within factor groups was mixed. 5-year Earnings Variability showed the strongest performance (+4.1%), a reversal from the prior quarter when it was the worst performing factor. Free Cash Flow to Price was the largest laggard at -5.7%.

## SUBFACTOR PERFORMANCE

All Value subfactors underperformed in Q4 while most Low Volatility subfactors underperformed. The performance of other subfactors within factor groups was mixed. 5-Year Earnings Variability had the strongest performance (+4.1%) with most of the performance coming in October, while Free Cash Flow to Price was the weakest (-5.7%).

**Figure 4: Performance of cap-weighted top-minus-bottom quintiles (Q4 2023)**



Source: Russell Investments; MSCI; Refinitiv

<sup>1</sup> Top minus bottom cap-weighted quintile portfolios are not investible and are used to proxy the performance of the subfactors used in the construction of RFPs. RFPs are long only portfolios.

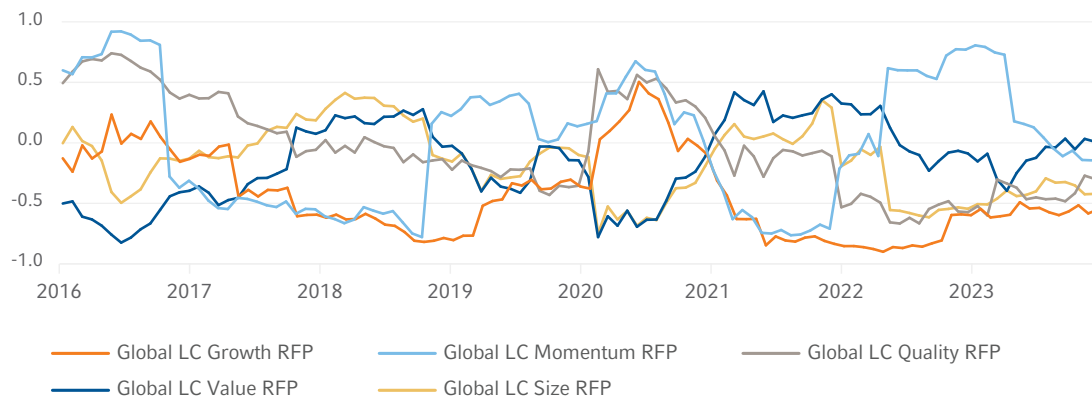
## EX-ANTE CORRELATIONS AND ACTIVE RISK OF GLOBAL RUSSELL INVESTMENTS FACTOR PORTFOLIOS

There have been no significant changes in the correlation structure since September 2023, as illustrated in Figure 5 below. While there has been a slight shift in the trend between Size and Low Volatility, it's overall fairly muted. Momentum continued its trend of moving from positively correlated at the beginning of the year to uncorrelated. The rest of the correlation estimates have largely remained stable, with no significant changes. While we observed an uptick in the ex-ante active risk levels—predictive measures of the active risk associated with factor portfolios in Figure 6—for Size over the prior quarter, the remaining factors have maintained a consistent downward trajectory, continuing a signal from the prior quarter of a return to normal in the active riskiness of these portfolios.

## EX-ANTE CORRELATIONS AND ACTIVE RISK

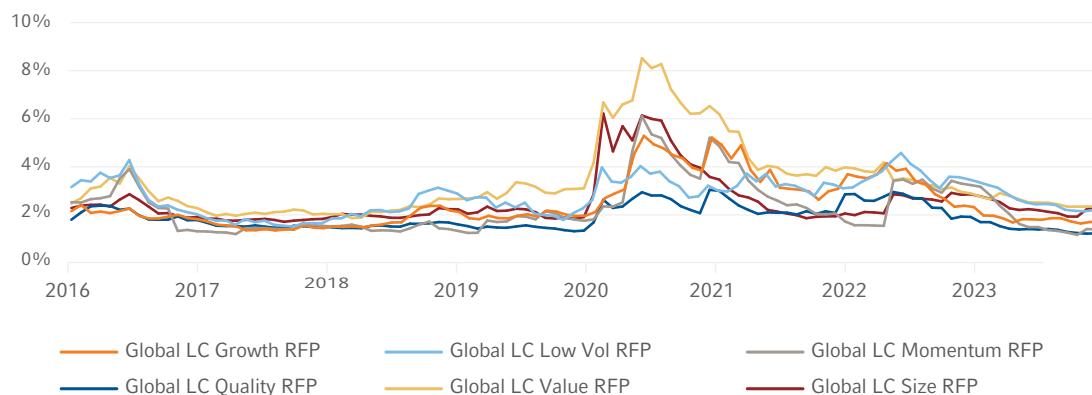
The correlation between Global LC Momentum RFP and Global LC Low Volatility RFP has continued to decrease, indicating the shift in relative performance of the Low Volatility factor. The rest of the correlation estimates have remained stable from the prior quarter. While we observe an uptick in Size over the prior quarter, the ex-ante active risk levels—predictive measures of the active risk associated with factor portfolios—have maintained a consistent downward trajectory, continuing a signal from the prior quarter of a return to normal in the active riskiness of these portfolios.

**Figure 5: Ex-ante correlations with Global LC Low Volatility RFP**  
(01/2016-12/2023)



Source: Russell Investments; Axioma; MSCI

**Figure 6: Ex-ante tracking errors of Global RFPs**  
(01/2016-12/2023)



Source: Russell Investments; Axioma; MSCI

## SPOTLIGHT ON: FACTOR PERFORMANCE IN DIFFERENT INTEREST RATE REGIMES

In November and December, markets rallied on rising optimism of an end to interest rate increases and the possibility of interest rate cuts in 2024. During this rally, we observed a shift in leadership to growth strategies vs. value strategies. If interest rates have indeed peaked—as investors expect—and a period of easing is realised in 2024, what is the impact on factor performance during these different regimes? We examined historical periods of different interest rate regimes and inspected factor performance during and immediately after these regimes. The charts below show the results of our findings.

**Figure 7: Cumulative performance during rising interest rates**

START TO END	Mkt_Less_RF	SMB	HML	RMW	CMA	MOM	QMJ
September 1965 to November 1966	-7.3%	13.3%	3.6%	-3.1%	-2.3%	24.0%	-0.5%
October 1967 to August 1969	-5.0%	13.9%	7.9%	-3.9%	6.3%	17.3%	7.3%
February 1972 to July 1974	-35.5%	-26.7%	40.0%	-1.0%	25.6%	56.6%	19.5%
January 1977 to March 1980	-5.5%	59.3%	6.0%	4.3%	5.3%	70.8%	-1.7%
July 1980 to January 1981	11.2%	11.0%	-15.0%	9.5%	-7.4%	16.0%	6.7%
February 1983 to July 1984	-5.3%	1.6%	29.3%	13.8%	16.1%	-2.0%	18.5%
March 1988 to April 1989	11.7%	2.8%	10.0%	1.2%	7.9%	10.4%	0.7%
December 1993 to April 1995	7.5%	-5.4%	2.3%	8.3%	3.5%	6.0%	15.0%
January 1999 to July 2000	12.2%	11.5%	-19.5%	-26.6%	-0.4%	41.4%	0.4%
May 2004 to July 2006	13.7%	6.1%	27.1%	8.8%	-5.9%	16.9%	-1.3%
November 2015 to January 2019	36.5%	1.4%	-7.2%	1.8%	-4.1%	-9.0%	20.1%
March 2022 to July 2023	1.5%	-1.2%	-5.6%	13.1%	0.9%	-6.4%	13.8%
<b>Average Return</b>	<b>3.0%</b>	<b>7.3%</b>	<b>6.6%</b>	<b>2.2%</b>	<b>3.8%</b>	<b>20.2%</b>	<b>8.2%</b>
<b>Positive Hit Rate</b>	<b>56.6%</b>	<b>50.9%</b>	<b>56.6%</b>	<b>52.8%</b>	<b>53.6%</b>	<b>63.4%</b>	<b>55.1%</b>

Source: Fama French website, AQR

During periods of rising interest rates, Momentum (MOM) was the strongest performer with a +20.2% return and a high 63% hit rate. Quality (QMJ), Size (SMB) and Value (HML) are next with positive performance of +8.2%, +7.3% and +6.6%, respectively. Investment (CMA, Conservative minus Aggressive) and Profitability (RMW) were significantly weaker with respective performance of +3.8% and +2.2%.

**Figure 8: Cumulative performance during easing interest rates**

START TO END	Mkt_Less_RF	SMB	HML	RMW	CMA	MOM	QMJ
December 1966 to April 1967	17.9%	17.4%	-3.3%	7.0%	-9.4%	-0.6%	-3.3%
March 1970 to February 1971	3.3%	-3.0%	14.1%	0.0%	17.4%	-13.1%	4.5%
August 1974 to May 1975	15.6%	6.5%	-2.0%	-6.9%	5.3%	-5.1%	-3.1%
April 1980 to June 1980	12.8%	4.6%	0.7%	-1.9%	-1.3%	0.0%	-3.8%
July 1981 to January 1983	0.8%	4.7%	17.0%	-0.6%	16.1%	33.2%	10.5%
August 1984 to August 1986	56.6%	-10.7%	13.5%	19.3%	1.4%	28.7%	17.8%
May 1989 to August 1992	18.1%	-14.2%	-6.5%	28.8%	-0.4%	50.6%	35.5%
December 2000 to December 2001	-13.7%	30.3%	23.8%	18.7%	16.4%	-4.4%	12.0%
September 2007 to December 2008	-38.3%	-0.1%	-4.5%	26.4%	1.0%	40.5%	39.1%
August 2019 to March 2020	-14.4%	-13.4%	-22.8%	-3.0%	-2.0%	8.7%	0.7%
<b>Average Return</b>	<b>5.9%</b>	<b>2.2%</b>	<b>3.0%</b>	<b>8.8%</b>	<b>4.4%</b>	<b>13.9%</b>	<b>11.0%</b>
<b>Positive Hit Rate</b>	<b>55.6%</b>	<b>50.3%</b>	<b>51.0%</b>	<b>63.6%</b>	<b>49.0%</b>	<b>62.9%</b>	<b>66.2%</b>

Source: Fama French website, AQR

Interestingly, when compared to a rising interest rate environment, we see that the same factors performed the best. When interest rates were going down, Momentum (MOM) and Quality (QMJ) were the highest performers with returns of +13.9% and +11%, respectively. However, we saw a change in the Profitability (RMW) factor with a positive return of +8.8% compared to only +2.2% during rising interest rates. We saw the reverse with Value and Size, with those factors being the weakest performers with the average return down by -3.6% and -5.1%, respectively, compared to periods of rising interest rates. Investment (CMA) didn't have a large change between the two regimes.



**Figure 9: Cumulative performance during flat interest rates**

START TO END	Mkt_Less_RF	SMB	HML	RMW	CMA	MOM	QMJ
July 1963 to August 1965	23.6%	2.5%	14.1%	1.1%	3.0%	16.7%	-0.7%
May 1967 to September 1967	4.7%	16.3%	3.6%	-1.4%	2.4%	6.8%	2.1%
September 1969 to February 1970	-7.7%	-0.9%	-3.6%	3.3%	2.0%	7.6%	8.5%
March 1971 to January 1972	7.3%	2.6%	-7.1%	8.2%	-3.7%	8.7%	5.8%
June 1975 to December 1976	17.2%	12.6%	28.8%	-7.0%	13.3%	6.6%	-10.7%
February 1981 to June 1981	-0.3%	8.8%	8.9%	-2.3%	4.0%	-3.8%	1.2%
September 1986 to February 1988	-1.6%	-8.5%	0.9%	8.4%	14.1%	-10.1%	12.1%
September 1992 to November 1993	14.8%	13.1%	13.8%	-5.7%	9.1%	29.6%	-12.6%
May 1995 to December 1998	101.0%	-29.1%	11.0%	24.2%	0.3%	61.1%	33.5%
August 2000 to November 2000	-12.1%	-4.0%	25.5%	23.0%	20.1%	0.6%	21.5%
January 2002 to April 2004	1.6%	29.2%	14.0%	10.4%	31.6%	1.6%	2.8%
August 2006 to August 2007	12.1%	-1.9%	-9.6%	0.8%	1.3%	-0.5%	3.4%
January 2009 to October 2015	169.9%	7.3%	-14.7%	8.5%	4.5%	-34.2%	6.4%
February 2019 to July 2019	9.4%	-5.9%	-7.2%	3.0%	-3.1%	8.2%	2.6%
April 2020 to February 2022	75.9%	16.7%	27.1%	25.2%	16.2%	-15.9%	2.4%
<b>Average Return</b>	<b>27.7%</b>	<b>3.9%</b>	<b>7.0%</b>	<b>6.7%</b>	<b>7.7%</b>	<b>5.5%</b>	<b>5.2%</b>
<b>Positive Hit Rate</b>	<b>64.9%</b>	<b>53.1%</b>	<b>53.1%</b>	<b>56.4%</b>	<b>54.8%</b>	<b>61.3%</b>	<b>51.8%</b>

Source: Fama French website, AQR

Not surprisingly, the market experienced the strongest performance when monetary policy was in a static state, with a strong +27% return. During those periods, Investment (CMA), Value (HML) and Profitability (RMW) were the best performers. Momentum (MOM) and Quality (QMJ) and Size (SMB) were the weakest.

Momentum (MOM) and Quality (QMJ) were the best performers in both rising and falling interest rate regimes. During periods when interest rates were flat and markets were in a recovery phase, Profitability (RMW), Value (HML) and Investment (CMA) were the best performers. Size only performed well in rising interest rate regimes and was the weakest performing factor in other regimes.

**Figure 10: Average cumulative performance 1-year following the end of each regime**



Finally, we looked at the performance of the factors one year after the end of each regime. Here, we observed a low distinction in returns following peak interest rates, with Value (HML) performing the worst (+4.5%) while Profitability (RMW), Momentum (MOM) and Quality (QMJ) were the best performers (+6.5%, +6.2%, +5.8%, respectively). During the market recovery phase, one year following the lowest point in interest rates, Size (SMB) was by far the best performer (+12%), followed by Investment (CMA) and Value (HML) with returns of +6.0% and +5.6%, respectively.

The one-year period following flat interest rates was best characterized by a shift from recovery to an expansion phase of the market. Here, we saw a shift in leadership, with Momentum (MOM) and Quality (QMJ) as the best performers, with returns of +10.3% and +5.4%, respectively. Size (SMB) and Value (HML) were next at +5% and +4%. Investment (CMA) and Profitability (RMW) were the weakest with returns of +3.3% and +2.7%, respectively.

## THE BOTTOM LINE

- Russell Investments' Global Large Cap Growth, Momentum and Size factor portfolios outperformed the MSCI ACWI benchmark, while Global Large Cap Value and Low Volatility underperformed. The Global Large Cap Quality factor portfolio was flat for the quarter.
- The correlation between Global LC Momentum RFP and Global LC Low Volatility RFP continued to decrease, while the rest of the correlation estimates remained stable from the prior quarter.
- During periods of falling interest rates, the Momentum (MOM) and Quality (QMJ) factors have historically performed the best.

## CONNECT & FOLLOW US

Call Russell Investments at [+612 9229 5111](tel:+61292295111)  
or visit [russellinvestments.com/au](https://russellinvestments.com/au)



## ABOUT RUSSELL INVESTMENTS

Russell Investments is a leading global investment solutions partner providing a wide range of investment capabilities to institutional investors, financial intermediaries, and individual investors around the world. Since 1936, Russell Investments has been building a legacy of continuous innovation to deliver exceptional value to clients, working every day to improve people's financial security. Headquartered in Seattle, Washington, Russell Investments has offices worldwide, including: Dubai, London, New York, Paris, Shanghai, Sydney, Tokyo, and Toronto.

### IMPORTANT INFORMATION

Issued by Russell Investment Management Ltd ABN 53 068 338 974, AFSL 247185 (RIM). This document provides general information only and has not been prepared having regard to your objectives, financial situation or needs. Before making an investment decision, you need to consider whether this information is appropriate to your objectives, financial situation or needs. This information has been compiled from sources considered to be reliable, but is not guaranteed. This document is not intended to be a complete statement or summary.

To the extent permitted by law, no liability is accepted for any loss or damage as a result of reliance on this information.

This material does not constitute professional advice or opinion and is not intended to be used as the basis for making an investment decision.

This work is copyright 2024. Apart from any use permitted under the Copyright Act 1968, no part may be reproduced by any process, nor may any other exclusive right be exercised, without the permission of Russell Investment Management Ltd.

First used: January 2024

CORP-12407