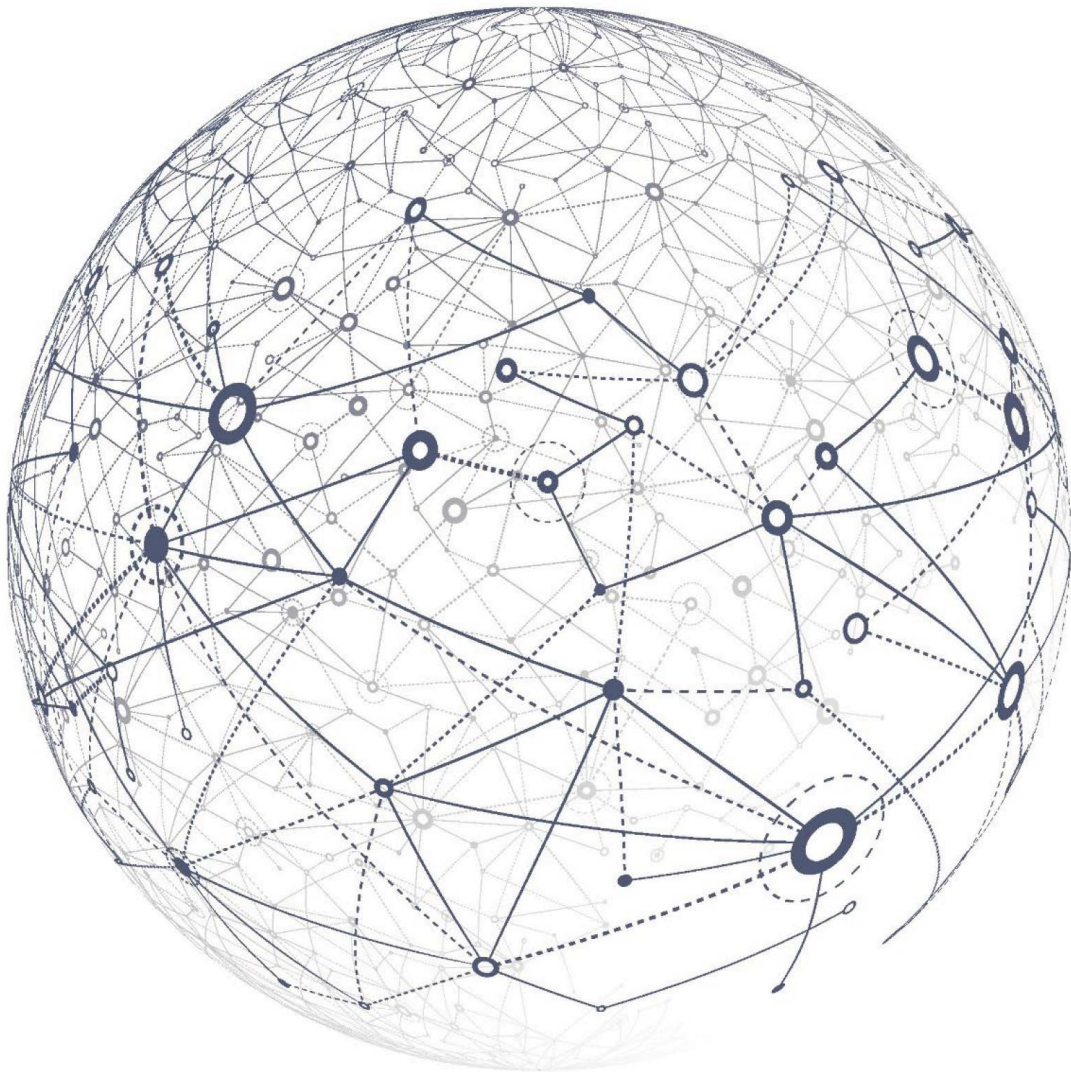


# Russell Investments managed funds



Global solutions for local investors.



---

# Who we are

We are a leading global investment solutions partner, dedicated to improving people's financial security.

With a proud history of helping New Zealand's largest investors since the 1980s, today we help investors of all sizes navigate complex global markets.

Our funds are diversified and cost-effective, providing exposure to a range of local and global asset classes. We offer investors actively managed multi-manager funds and a sustainable index-oriented global shares fund.

# Who we partner with

We put leading investment managers to work for you.

The Russell Investments multi-manager funds draw on the expertise of specialist external managers in the funds, many of whom are usually inaccessible to all but the largest local investors. They include highly regarded global firms such as Wellington Management Company, Schroders and Western Asset Management as well as specialist and differentiated boutique firms including Sanders Capital, RWC, BlueBay Asset Management and J O Hambro Capital Management. With extensive capabilities spanning manager research, portfolio management and implementation, Russell Investments brings its global capabilities to local investors.



---

# Keep more of what you earn

Small differences in fees and costs can have a substantial impact on your long-term returns.  
The Russell Investments funds provide cost-effective exposure to a range of asset classes.

FUND	MANAGEMENT FEE	ESTIMATED IN-FUND COSTS (INCL. GST)	ESTIMATED TOTAL ANNUAL FUND CHARGES (INCL. GST)
Russell Investments New Zealand Shares Fund	0.70%	0.09%	0.79%
Russell Investments Global Shares Fund	0.80%	0.09%	0.89%
Russell Investments Hedged Global Shares Fund	0.80%	0.12%	0.92%
Russell Investments New Zealand Fixed Interest Fund	0.40%	0.09%	0.49%
Russell Investments Global Fixed Interest Fund	0.47%	0.12%	0.59%
Russell Investments Sustainable Global Shares Fund	0.25%	0.09%	0.34%
Russell Investments Hedged Sustainable Global Shares Fund	0.25%	0.11%	0.36%
Russell Investments Global Listed Infrastructure Fund	0.85%	0.20%	1.05%

Management fees effective as of 1 November 2021.

\*Management fee quoted excludes GST, please refer to the PDS for additional details regarding the treatment of GST.

# Leading investment managers

## Cost-effective access to specialist 'best of breed' expertise.

The funds go well-beyond in-house strategies; extensively researching and rating thousands of investment managers and opportunities to find those ideally suited to your portfolio.

Our globally consistent approach ensures we remain focused on helping investors achieve their goals. We take a global, "best-of-breed" approach to manager research, with researchers strategically placed around the world, searching for future outperformers. Our process, refined over almost five decades, is rigorous, ongoing, and has proven to be effective.

## Full range of services helping investors meet their long-term objectives

### Investment advice

- Portfolio strategy
- Capital markets forecasting
- Research & policy development
- Risk budgeting
- Strategic asset allocation
- Manager research
- Responsible investment

**Providing strategic global investment advice for five decades**

### Multi-manager investing

- Access to some of the world's best money managers
- Diversified / Dynamic multi-style portfolios across most global asset classes and market segments
- Public / private markets
- Ongoing implementation, tracking and oversight

**Global leaders in multi-manager investing**

### Implementation services

- Overlay services
- Transition management
- Customised portfolio solutions
- Enhanced Portfolio Implementation (EPI) and outsourced trading
- FX and cash

**Specialist global implementation services**

### Direct investing

- Transparent, objective methodology
- Smart beta
- Currency
- Factor exposures
- Decarbonisation
- Customised rules-based exposures

**Global platform providing cost-effective beta and customised exposures**

### Investment Outsourcing (OCIO)

- Complete range of customised global outsourcing solutions, including Outsourced Chief Investment Officer (OCIO)
- Bringing together all our key capabilities

**A leading provider of global investment outsourcing**

Implementation Services are provided by Russell Investments Implementation Services, LLC, an SEC registered investment adviser and broker-dealer member FINRA / SIPC

# Russell Investments PIE funds

The Russell Investments Portfolio Investment Entity (PIE) fund range provides core portfolio solutions covering major asset classes. The fund range is managed by 15+ subadvisors, and includes both large institutional and boutique underlying managers and strategies that are not readily accessible to NZ investors.

## Active Equity

### Russell Investments Global Shares Fund

The **Russell Investments Global Shares Fund** provides exposure to international shares and is actively managed using a multimanager approach. The objective is to outperform the MSCI ACWI Index (NR) consistently over time.

FUND INFORMATION		MANAGER/ STRATEGY	STRATEGIC ALLOCATION	STYLE
<b>Benchmark</b>	MSCI ACWI Index (NR)	Fiera Capital	11%	Core global equities
<b>Inception date</b>	14 November 2012	J O Hambro Capital Management Group	10%	UK equity dynamic
<b>Manager</b>	Jon Eggins, CFA	Russell Investments	3%	Cash
<b>Manager Start Date</b>	1 June 2018	Man Numeric	10%	Core global equities, global low volatility
<b>Target alpha (Gross)</b>	2% per annum	Nissay Asset Management	10%	Japanese equities
<b>Target tracking error</b>	3 - 5% per annum	Oaktree Capital	11%	Emerging markets
<b>Total Annual Fund Charges</b>	0.90%	Russell Investments	14%	Positioning strategies
<b>GLOBAL SHARES FUND HEDGED</b>		RWC Partners	7%	Global emerging markets
<b>Benchmark</b>	MSCI ACWI Index (NR) – NZDH	Sanders Capital	16%	Core global value
<b>Total Annual Fund Charges</b>	0.92%	Wellington Management	8%	Core global growth horizons

As at 30 September 2021 unless otherwise stated and subject to change.

## Active Equity (continued)

### Russell Investments NZ Shares Fund

The **Russell Investments NZ Shares Fund** provides diversified exposure to New Zealand Shares. The objective is to outperform the S&P/NZX 50 Index (gross and including imputation credits) consistently over time.

FUND INFORMATION	
Benchmark	S&P/NZX 50 Index (Gross) with Imputation Credits
Inception date	14 February 2013
Manager	Andrew Zenonos, CFA
Manager Start Date	14 February 2013
Target alpha (Gross)	1.5%
Target tracking error	2.5 - 3% per annum
Total Annual Fund Charges	0.79%

MANAGER/STRATEGY	STRATEGIC ALLOCATION	STYLE
Devon Funds	40%	Market-Oriented, Value Biased
Harbour Asset management	40%	Growth
Russell Investments	20%	Positioning Strategies

## Index-Oriented Equity

### Russell Investments Sustainable Global Shares Fund

The **Russell Investments Sustainable Global Shares Fund** provides diversified exposure to the global share market. The Fund is designed to provide access to a broad range of global shares, in developed and emerging markets, while reducing exposure to carbon emissions and fossil fuel reserves by 50% compared to its broad market benchmark. The Fund also increases exposure to companies with a high responsible investment rating and to those participating in the transition to renewable energy.

FUND INFORMATION	
Benchmark	MSCI ACWI Index (NR)
Inception date	14 December 2021
Manager	James Harwood
Manager Start Date	15 December 2021
Target tracking error	0.50%
Total Annual Fund Charges	0.33%
Exclusions	Coal, tobacco, weapons, uranium
Carbon emissions	Target 50% lower vs benchmark
Fossil fuel	Target 50% lower vs benchmark
ESG Profile	Maintain or improve ESG score

MANAGER/STRATEGY	STRATEGIC ALLOCATION	STYLE
Russell Investments	100%	Index-oriented equity

GLOBAL SUSTAINABLE SHARES FUND	
Benchmark	MSCI ACWI Index (NR) – NZDH
Total Annual Fund Charges	0.36%

As at 30 September 2021 unless otherwise stated and subject to change.

## Fixed Income

### Russell Investments Global Fixed Interest Fund

The **Russell Investments Global Fixed Interest Fund** provides exposure to international fixed interest securities and is actively managed using a multi-manager approach. The fund's target is to be fully hedged back to New Zealand dollars. The objective is to outperform the Bloomberg Barclays Global Aggregate Bond Index - NZDH (TR) consistently over time.

FUND INFORMATION		MANAGER/ STRATEGY	STRATEGIC ALLOCATION	STYLE
<b>Benchmark</b>	Bloomberg Barclays Global Aggregate Bond Index - NZDH (TR)	BlueBay Asset Management	26%	Country selection
<b>Inception date</b>	3 February 2010	Russell Investments	14%	Intgrated Global Governments
<b>Manager</b>	Gerard Fitzpatrick	Russell Investments	14%	Intelligent Credit
<b>Manager Start Date</b>	15 March 2019	Russell Investments	5%	Liquidity
<b>Target alpha (Gross)</b>	1% p.a. over a rolling market cycle	Schroders	13%	Securitised specialist
<b>Target tracking error</b>	1.75% per annum	Western Asset Management	28%	Security selection
<b>Total Annual Fund Charges</b>	0.59%			

### Russell Investments NZ Fixed Interest Fund

The **Russell Investments NZ Fixed Interest Fund** provides exposure to a diversified portfolio of predominantly investment grade New Zealand dollar denominated fixed interest securities. The objective is to outperform the Bloomberg NZBond Composite 0+ Yr Index (TR) consistently over time.

FUND INFORMATION		MANAGER/ STRATEGY	STRATEGIC ALLOCATION	STYLE
<b>Benchmark</b>	Bloomberg NZ Bond Composite 0+ Index (TR)	Harbour Asset Management	50%	Short term active, active management of rates strategies.
<b>Inception date</b>	14 February 2013	Western Asset Management	50%	Medium term active. Greater focus on credit.
<b>Manager</b>	Clive Smith			
<b>Manager Start Date</b>	14 February 2013			
<b>Target alpha (Gross)</b>	0.50%+			
<b>Target tracking error</b>	1 - 2% per annum			
<b>Total Annual Fund Charges</b>	0.49%			

As at 30 September 2021 unless otherwise stated and subject to change.

## Listed Alternatives

### Russell Investments Global Listed Infrastructure Fund

The **Russell Investments Global Listed Infrastructure Fund** provides targeted exposure to the global listed infrastructure sector. The objective of the fund is to outperform the S&P Global Infrastructure Index - NZDH (Net TR) consistently over time.

FUND INFORMATION		MANAGER/ STRATEGY	STRATEGIC ALLOCATION	STYLE
Benchmark	S&P Global Infrastructure Index - NZDH (Net TR)	Cohen & Steers	15%	Growth, valuation sensitive
Inception date	16 March 2022	First Sentier Investors	38%	Fundamental with growth at a reasonable price
Manager	Patrick Nikodem	Nuveen	37%	Style Neutral, diversified
Manager Start Date	16 March 2022	Russell Investments	10%	Active risk overlay
Target alpha (Gross)	2%			
Target tracking error	4% per annum			
Total Annual Fund Charges	1.05%			

As at March 2022 unless otherwise stated and subject to change.



---

# How to access

The Russell Investments New Zealand Funds are available through the platforms listed below.



# How we help NZ investors



Full-service global multi-asset fund manager and agency broker



Investment consulting, manager research and advice is our core competency and is at the heart of everything we do in New Zealand



We typically work with our clients on their total portfolio, aiming to improve investment outcomes through the development of long-term and meaningful partnerships



Our time-tested advice and implementation framework promotes simplicity, transparency and accountability

**Matthew J. Arnold, CFA, CAIA**  
Director, New Zealand



Phone: +64 9 359 3576  
Email: marnold@russellinvestments.com

**Fiona Lintott**  
Senior Client Relationship Manager



Phone: +64 9 359 3584  
Email: flintott@russellinvestments.com

**Maria Flaherty**  
Senior Client Relationship Manager



Phone: +64 9 359 3596  
Email: mflaherty@russellinvestments.com

**Scott O'Ryan**  
Business Development Manager



Phone: +64 9 359 3585  
Email: soryan@russellinvestments.com

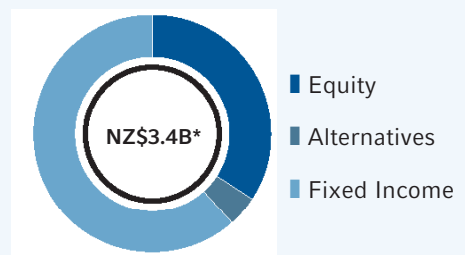
## Firm at a glance

AUM **NZD\$469.1 billion**

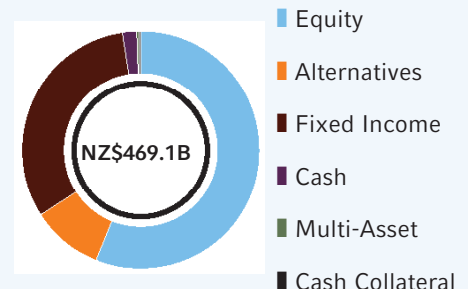
Number of Associates **1,332**

Offices Worldwide **19**

## New Zealand AUM by Asset Class



## Global AUM by Asset Class



As at March 2022

\*As at April 2022

## For more information

Call Russell Investments at **+09 357 6633** or visit [russellinvestments.co.nz](https://russellinvestments.co.nz)

Investors should also refer to the quarterly Fund Updates, which are available on [www.iisolutions.co.nz](https://www.iisolutions.co.nz) and [www.business.govt.nz/disclose](https://www.business.govt.nz/disclose)

### IMPORTANT INFORMATION

This document is provided by Russell Investment Group Ltd (Russell Investments) in good faith and is designed as a summary to accompany the Product Disclosure Statement for the Russell Investment Funds (Funds). The Product Disclosure Statement is available from Russell Investments, or the issuer of the Funds, Implemented Investment Solutions Limited (IIS), and on <https://disclose-register.companiesoffice.govt.nz/>. The information contained in this document is not an offer of units in the Fund or a proposal or an invitation to make an offer to sell, or a recommendation to subscribe for or purchase, any units in the Fund. If you are making an investment directly then you will be required to complete the application form, which can be obtained from the issuer. The information and any opinions in this document are based on sources that Russell Investments believes are reliable and accurate. Russell Investments, its directors, officers and employees make no representations or warranties of any kind as to the accuracy or completeness of the information contained in this document and disclaim liability for any loss, damage, cost or expense that may arise from any reliance on the information or any opinions, conclusions or recommendations contained in it, whether that loss or damage is caused by any fault or negligence on the part of Russell Investments, or otherwise, except for any statutory liability which cannot be excluded. All opinions reflect Russell Investments' judgment on the date of this document and are subject to change without notice. This disclaimer extends to IIS, and any entity that may distribute this publication. The information in this document is not intended to be financial advice for the purposes of the Financial Markets Conduct Act 2013. In particular, in preparing this document, Russell Investments did not take into account the investment objectives, financial situation and particular needs of any particular person. Professional investment advice from an appropriately qualified adviser should be taken before making any investment. Past performance is not necessarily indicative of future performance, unit prices may go down as well as up and an investor in the fund may not recover the full amount the capital that they invest. No part of this document may be reproduced without the permission of Russell Investments or IIS. IIS is the issuer and manager of the Russell Investments Funds. Russell Investments is the investment manager of the Russell Investment Funds. Russell Investments' ownership is composed of a majority stake held by funds managed by TA Associates, with a significant minority stake held by funds managed by Reverence Capital Partners. Russell Investments' employees and Hamilton Lane Advisors, LLC also hold minority, non-controlling, ownership stakes.

Copyright © 2022 Russell Investments. All rights reserved. This information contained on this publication is proprietary and may not be reproduced, transferred, or distributed in any form without prior written permission from Russell Investments.