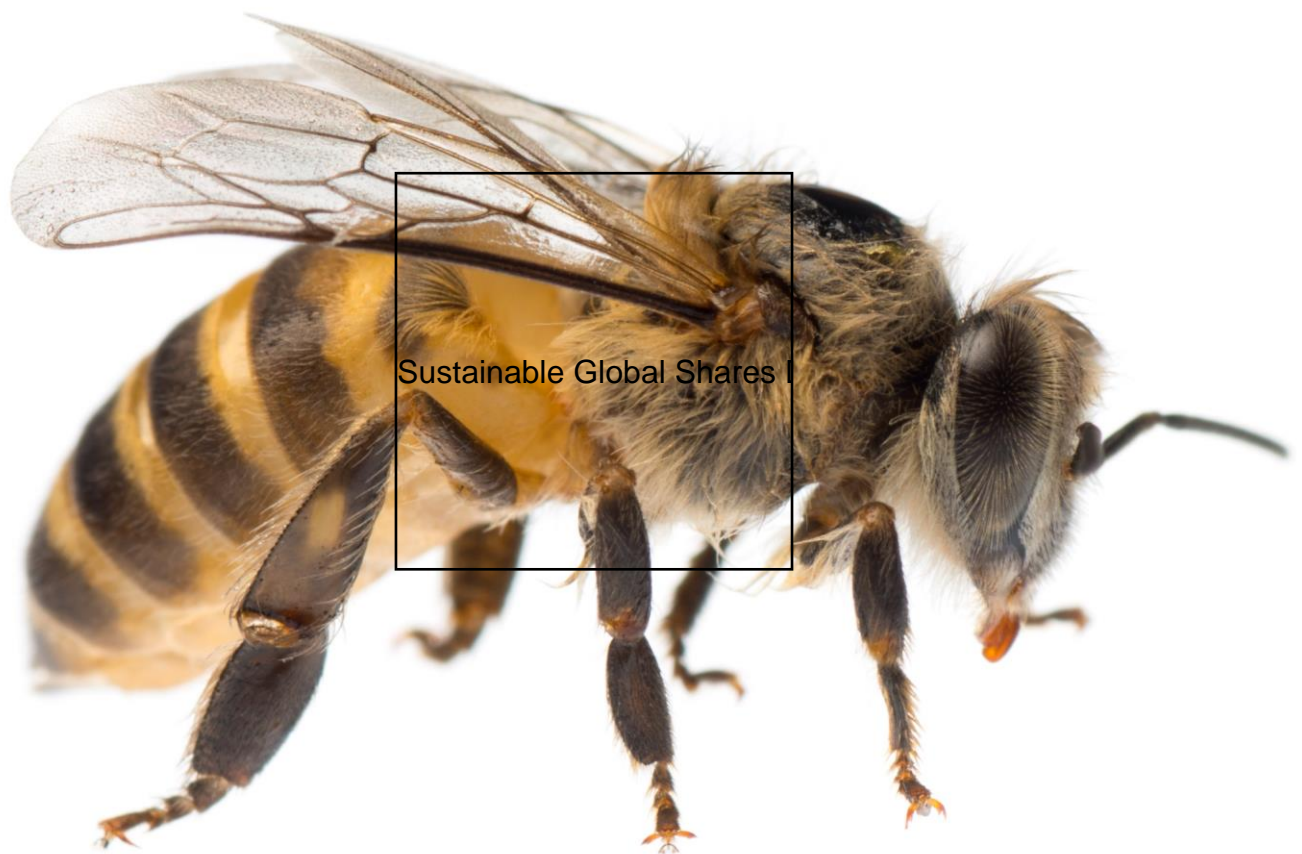


# Sustainable Global Shares Decarbonisation Strategy

A sustainable investing solution for the energy  
transition



---

As investors increasingly look to incorporate environmental, social and governance (ESG) criteria into their decision-making process, tackling the investment implications of a transition to a low carbon economy has been at the forefront of this movement. Investment solutions addressing the energy transition have primarily focused on what we refer to as “standard decarbonisation”: a reduction in exposure to carbon emissions and/or divestment from fossil fuel reserves within equity portfolios.

Our research has found that this standard decarbonisation approach can unintentionally lead to reduced exposure to renewable energy and a reduction in the aggregate ESG profile of a portfolio. In this paper, we present the Russell Investments Sustainable Global Shares strategy. The strategy incorporates additional sources of insight informative to the sustainability profile of a portfolio: increased exposure to renewable energy, incorporation of ESG scores and a targeted exclusion in thermal coal exposure.

Our objective is to help investors align portfolios with the transition to a low carbon economy without changing the return profile or introducing unintentional risks. Going beyond the reduction of carbon emissions alone, the portfolio is designed to have both a higher aggregate ESG score as well as higher exposure to renewables relative to the benchmark. In doing so, the solution tilts a global equity portfolio away from those companies with higher exposure to carbon-related risks and towards those companies expected to contribute to, and benefit from, the energy transition.

## Overview

Launched in 2015, the objective of Russell Investments Decarbonisation 1.0 Strategy is to reduce the carbon exposure of a universe by a specified percentage while minimising the active risk. Specifically, the Strategy achieves a 50% reduction in relative carbon emissions and 50% reduction in the carbon reserves while targeting a tracking error of less than 1%. A direct response to the initiatives outlined by the United Nations supported Principles for Responsible Investment (PRI), the Strategy was designed as a means for signatories to implement a preference for decarbonisation across their listed equity portfolios while effectively managing risk at the stock, sector and country level.

In our original decarbonisation strategy, we highlight how combining carbon emissions and reserves incorporates both current and future carbon criteria into our solution. We reduce exposure to companies with poor current environmental impact by reducing portfolio exposure to carbon emissions. We mitigate future carbon risks through reduced exposure to carbon reserves, many of which can never be extracted in a reduced emission scenario<sup>1</sup>, and hence may become “stranded assets”.

In Smith, Bennett & Velvadapu (2016) (SBV), we compare several portfolio construction approaches to achieving these two standard decarbonisation criteria and present a proprietary portfolio construction technique, that avoids the common pitfalls of standard decarbonisation. Currently, the two most common approaches to addressing the issues of portfolio decarbonisation are naïve fossil fuel divestment, effectively divesting from any company that holds fossil fuel reserves, and standard decarbonisation, or reducing the carbon emissions of a portfolio relative to benchmark.

Building on our prior research, here we demonstrate that these common approaches to carbon emission and reserve reduction can lead to lower exposure to renewable energy and potential to increase exposure to other, non-carbon, ESG risks, as measured by overall ESG rating.

The Russell Investments Sustainable Global Shares Strategy incorporates three additional criteria that complement our original research. In addition to incorporating future risks of an energy transition through carbon reserves, future opportunities are also now incorporated through the addition of renewable energy production in the form of our Green Energy Score.

---

<sup>1</sup> Unburnable Carbon 2013: Wasted capital and stranded assets (Carbon Tracker, 2013).

Building on evidence that thermal coal energy use will need to be dramatically reduced to meet a 2-degree warming scenario<sup>2,3</sup>, we also increase the precision of our carbon reserve reduction through an explicit thermal coal exclusion. In order to incorporate not only carbon outcomes, as measured by these three criteria, but also sustainable practices, the portfolio is designed to have a higher ESG<sup>4</sup> score relative to the benchmark. As described in more detail below, our ESG score focuses on the handful of sustainability issues that are financial material to a given industry. The purpose of these additional criteria is to provide a wider view of how a portfolio aligns with sustainability goals beyond carbon emission reductions.

These objectives are combined in the Sustainable Global Shares portfolio construction process, which solves for the combination of securities that achieves the aggregate carbon emissions, carbon reserves, green energy score and ESG profile targets with the minimum amount of active share and transaction costs.

## Data

This study uses two primary data sources: carbon and energy data are sourced from MSCI and underlying ESG data is sourced from Sustainalytics. The history available to us for both is relatively limited with ESG metrics and carbon emissions data available from 2009. Due to this restriction, our testing begins in August 2009, with ESG and carbon emissions data and introduces reserves and green energy ratios from 2013 onwards.<sup>5</sup>

There are four primary inputs to our model: carbon emissions, carbon reserves, energy production and our Material ESG scores. The rest of this section summarises the data and key considerations for each of these items.

## Carbon Exposure

There are a variety of carbon exposure techniques in use today. For our decarbonisation strategy, the use of carbon intensity defined as Scope 1 (direct) GHG emissions plus Scope 2 (electricity consumption) GHG emissions measured in metric tons of carbon dioxide equivalent (CO<sub>2</sub>e), divided by company revenue (\$m USD).<sup>6</sup>

$$\text{Issuer's Carbon Intensity} = \frac{\text{issuer's scope 1 and scope 2 GHG emissions}_i}{\text{issuer's \$M revenue}_i}$$

The company-level carbon intensity is then rolled up to calculate a portfolio-level carbon intensity using the weighted average carbon intensity (WACI) approach. The weighted average carbon intensity is defined as:

$$\text{Portfolio Weighted Average Carbon Intensity} = \sum_i^n \left( \frac{\text{current value of investment}_i}{\text{current portfolio value}} \times \frac{\text{issuer's scope 1 and scope 2 GHG emissions}_i}{\text{issuer's \$M revenue}_i} \right)$$

<sup>2</sup> "Analysis of the Impacts of Clean Power Plan", U.S. Department of Energy, Energy Information Administration, Independent Statistics & Analysis. (May 2015).

<sup>3</sup> United Nations, Paris Agreement, 21st Conference of the Parties, Paris. (December 2015).

<sup>4</sup> ESG information utilised is sourced from Sustainalytics.

<sup>5</sup> We attempt to preserve the as-was nature of the data as much as possible. For ESG and carbon emissions data this is possible, and the data is used as it was available for any a given research date after August 2009. Reserves and energy production data become available in 2015 and refers to years 2012 to present. For example, in August 2015 data was released for Exxon Mobil for 2012 and 2013 fiscal years. Given the limited scope of as-was data for reserves and energy production we have elected to use the reported data back to 2012 as a proxy in an effort to incorporate these criteria into our testing. The Sustainalytics ESG ranking data coverage and methodology was materially changed in 2011 (August).

<sup>6</sup> The relative carbon emissions, reserves and green energy score formulas presented in this paper refer to security-level characteristics. To generate a portfolio-level score we take the sum product of portfolio weight and security-level scores divided by coverage.

---

### Scope 3

The complete carbon emissions of a company's value chain, referred to as Scope 3, is currently not included in our calculation. This is primarily due to our lower confidence in Scope 3 data availability and reliability due to lower levels of company reporting and higher levels of estimation. Scope 3 emissions are also inherently more complicated to estimate because of the need first to identify and map a company's complete value chain. As data availability and robustness improves for measuring Scope 3 carbon emissions, we will continue to evaluate incorporating this data into our process. In the meantime, we take a targeted approach to addressing specific points in the value chain where carbon emissions are particularly substantial.

As explained in further detail in the sections that follow, we incorporate renewable energy production, thermal coal, and other fossil fuel reserves exposure specifically because these are sources of complete value chain emissions for not only the companies impacted by these metrics but indirectly for the entire security universe. Our research agenda includes continually evaluating and expanding this targeted approach. We believe this methodology addresses material sector-specific issues that have an impact on aggregated value chain emissions while at the same time maintains a high standard for data quality.

As highlighted in our original work on decarbonisation, carbon intensity is highly skewed with a small number of companies responsible for the vast majority of a portfolio's carbon emissions. The skewness of the data is observed not only at an asset level but also when grouped categorically by sector and to a lesser extent, by country.

This highlights a key opportunity of working with carbon data: high skew makes it possible to dramatically reduce carbon emissions and reserves characteristics while maintaining low benchmark-relative exposures. The fact that this skewness is observed across multiple dimensions (security-, sector-, industry-, and country-levels) also highlights a key risk associated with naïve approaches to standard decarbonisation: without controlling for the size of active bets made across these dimensions, simply divesting from the largest emitters will lead to large sector, industry and country bets relative to the benchmark. In the methodology section below, we will outline our approach for addressing the issue.

### Fossil fuel reserves

We refer to fossil fuel reserve intensity as the potential emissions (CO<sub>2</sub>e) of a company's fossil fuel reserves relative to total assets. Specifically, it is defined as:

$$\text{Issuer's fossil fuel reserve intensity} = \frac{\text{Fossil fuel reserves (m tonnes of potential CO}_2\text{e)}}{\text{Total assets (\$b USD)}}$$

Similar to the weighted average carbon intensity for carbon emissions, we also take the weighted average of the fossil fuel reserve intensity to arrive at a portfolio metric. Potential emissions from fossil fuel reserves is also sourced from MSCI. Whereas carbon emissions data is (theoretically) applicable to the entire universe, reserves data only applies to the subset of companies holding reserves implying that reserves data has a theoretical upper limit well below 100% and will be even more concentrated than carbon emissions in a few sectors.

---

## Renewable energy data

Following the Paris Climate Agreement, consensus has coalesced around a global warming target of less than 2 degrees Celsius. Achieving this proposal will involve a shift in energy production away from traditional sources of energy such as thermal coal and oil to more renewable sources of energy. The green energy score was developed to help ensure that in the process of reducing exposure to high carbon emitters, utility and energy companies that are investing in renewable technologies are not inadvertently excluded from the portfolio. This type of information is potentially relevant to positioning for the energy transition and goes beyond looking at carbon emissions and reserves metrics. Our analysis highlights that some of the companies with the highest carbon emissions also have high green energy scores, making them easily targets for exclusion in standard decarbonisation.

Specifically, the green energy score calculates the percentage of total energy produced from renewable energy sources. Classification of different energy sources is defined in the table below. This score ranges from a maximum score of 1 (entirely renewable energy) to a minimum of 0 (entirely sourced from brown or grey energy).

$$\text{Green energy ratio} = \frac{\text{Green power generation (GWh)}}{\text{Total power generation (GWh)}}$$

This is also calculated as a weighted average for the portfolio. In our process we calculate the green energy score for all applicable companies in the universe and calculate an aggregate score for the universe. In our optimisation process we constrain the final portfolio to have green energy score that is greater than the parent universe score. This additional piece of information allows us to distinguish between two otherwise similar companies, one of which has invested in renewable power generation and is positively exposed to the energy transition. This helps ensure that our Strategy is targeting those firms that are positively exposed to the energy transition.

It is interesting to note that decarbonising a portfolio can, at the same time, reduce exposure to renewables if one does not consider unintended exposures. While this result may be initially unintuitive, it highlights a key point that companies currently involved in energy production are well-positioned and well-incentivised to invest in renewable energy programs and without further considerations, standard decarbonisation has a tendency to underweight these companies. Our goal is to maintain the same aggregate reduction in standard carbon criteria<sup>7</sup> but use renewable energy as another consideration in evaluating which companies to underweight.

## Environmental, social, governance (ESG) characteristics

The Strategy also incorporates our aggregate ESG rating, the Material ESG Score.<sup>8</sup> This metric is designed to capture a company's performance on the sustainability issues that are financially material to the company's business. The methodology combines the Materiality Map from the Sustainability Accounting Standards Board (SASB) with underlying ESG data provided from Sustainalytics and MSCI. Our Material ESG Score ranges from 0 to 10, where 0 represents weak performance on a company's material sustainability issues, and 10 represents strong performance.

Unlike carbon data that is highly skewed, ESG ratings across a variety of providers approximate a much more bell-shaped distribution. This is because aggregated ESG scores are based on many characteristics, which are standardised and aggregated, leading to an averaging effect in the overall score. As a result, it is not feasible to achieve improvements at the same magnitude as the carbon objectives without changing the investment outcomes. For example, while a 50% reduction in carbon intensity generates approximately 30 basis points (bps) of tracking error, it takes only a 3% improvement in ESG rating to incur 30bps of tracking error. In our portfolio construction process, we look to achieve an aggregate ESG profile that is higher than the underlying universe and calibrate targets so to take similar amounts of active risk, rather than similar targets.

It would be reasonable to guess that a reduction in reserves and relative carbon emissions would result in an upward bias in the environment sleeve and, ultimately, the aggregate ESG score of a portfolio, rendering this constraint redundant. However, our analysis of the data showed this is rarely the case. Low carbon strategies have a natural tendency to overweight companies in sectors that are less carbon-intensive, such as financials and technology. These sectors have their own ESG risks that are not well measured by the carbon

---

<sup>7</sup> See "Portfolio Carbon. Measuring, disclosing and managing the carbon intensity of investments and investment portfolios. UNEP Finance Initiative - Investor Briefing, 2013".

<sup>8</sup> See "Materiality Matters: Targeting the ESG issues that can impact performance – the material ESG score". Russell Investments Research. Bennett, S. & Steinbarth, E. (February 2018).



---

characteristics. Our goal with the inclusion of this more industry-relevant ESG metric is to identify that when we overweight companies in a low carbon strategy, we are doing so in an informed way, and not inadvertently loading up on other sustainability risks.

In addition to providing this industry-specific materiality lens, the ESG score is also additive in that it gives insight into practices and a means to focus on forward-looking indicators, rather than the carbon metrics which are historical outcomes. We strive to strike a balance between the inclusion of forward-looking information such as company targets and momentum in indicators, while still maintaining high standards for data quality. For more details on the Material ESG methodology please refer to our Materiality Matters research papers.

## Exclusions – Thermal Coal

In addition to the criteria outlined above which are used to tilt the portfolio, our enhanced decarbonisation strategy also includes a coal exclusion.

Coal usage is already declining in its share of energy mix and projections extend this decline even more precipitously. In the U.S., coal production is projected to decline by 26% between 2015 and 2040. Beyond the economic rationale, there is also a recognition that coal contributes disproportionately to climate change. While exclusions are black and white in terms of outcome names on the list are simply not held – defining what constitutes involvement is less black and white. We define coal companies as companies with more than 10% of their revenue derived from mining thermal coal and coal power generation.

## Exclusions – Tobacco, Controversial Weapons, Firearms, Uranium

With a focus on sustainable investment considerations, the fund applies additional exclusions beyond thermal coal. Companies that manufacture cigarettes and other tobacco products are removed from the investment universe. A controversial weapons screen captures companies involved in activities that are deemed essential in the production and lethal use of either nuclear weapons, cluster munitions or anti-personnel mines. In addition, a civilian firearms manufacturers screen is used. Finally, any firms whose primary business is uranium mining are excluded.

## Methodology

The Strategy we have developed builds directly on insights gained from our previous research on decarbonisation strategies and existing client mandates. Specifically, we have previously argued and continue to maintain that an active share minimisation approach is more relevant than the standard decarbonisation alternatives<sup>9</sup> in that it allows us to meet multiple objectives while maintaining benchmark-like returns without introducing a risk model or covariance matrix.

For decarbonisation and ESG related strategies, we believe that it is extremely important to have a direct relationship between a company's exposure and the subsequent weight in the portfolio. The use of a risk model can compromise this direct relationship and provide unintuitive positions at the company level. To avoid the pitfalls of using a risk model we have focused on maximising the commonality (minimising active share) of the Strategy.<sup>10</sup>

The portfolio construction process begins with the parent benchmark or underlying strategy as the starting universe for our optimisation process. The optimisation methodology and objective function are the same regardless of whether the starting universe is a market-cap weighted benchmark, a smart beta strategy or another active strategy.

Our optimisation process solves for the combination of securities that achieves the aggregate carbon emissions, carbon reserves, green energy score and ESG profile targets with the minimum amount of active share and transaction costs. We employ several risk-related constraints including maximum asset, country, sector and industry deviations. Unlike the objective function, carbon and ESG criteria, the portfolio risk constraints will differ depending on the starting universe. Typically for narrower and more concentrated universes, we will utilise broader risk constraints and for broader and more diversified universes, we will utilise narrower constraints.

---

<sup>9</sup> "The Russell Investments Decarbonisation Strategy: Investigating different approaches to reducing the carbon emissions of an equity portfolio without materially impacting performance", (Smith, Bennett, Velvadapu 2016).

<sup>10</sup> See Appendix A for a further discussion of active share or our earlier research for an analysis of its benefits relative to other decarbonisation methodologies.

---

## Results

We evaluate the Strategy on the basis of its ability to meet the carbon and ESG objectives while maintaining low levels of active risk relative to the underlying portfolio. These results are summarised in the table below, using the MSCI ACWI Index as our starting point, using modelled data as at 31 October 2021.

Objectives versus results:

FACTOR	OBJECTIVE	RESULTS VS MSCI ACWI
Carbon emissions	50% reduction	Carbon emission reduction of 61%
Carbon reserves	50% reduction	Carbon reserves reduction of 70%
Active risk	Less than 1%	Predicted tracking error of 0.37%
Exclusions	Zero holding of companies with significant involvement in thermal coal, tobacco, controversial weapons, firearms, or uranium	No holdings of excluded stocks
Energy transition	Positive exposure	Green energy power generation is 45% higher than MSCI ACWI
ESG	Greater than benchmark	Average Material ESG Score improvement of 4%

Source: Russell Investments. Simulated data is presented for illustrative purposes only and is not necessarily a guide to future performance.

Given a goal of replicating the return profile of the underlying strategy, we do not have excess return expectations for the Russell Investments Sustainable Global Shares Fund\*.

## Active return and active risk

As stated previously, an objective of the Strategy is to offer a return profile similar to the underlying benchmark and so here we report the rolling one-year active return of the Strategy, or the difference between the benchmark and the actual return. The Strategy is effective in matching the return pattern of the underlying portfolio.

Unlike other optimised decarbonisation solutions, our Strategy explicitly minimises active share rather than tracking error. An implication of this approach is that realised tracking error does not systematically overshoot predicted tracking error, the active share targeting is successful in keeping tracking error within the range of a tracking error optimisation even though it is not explicitly targeted.

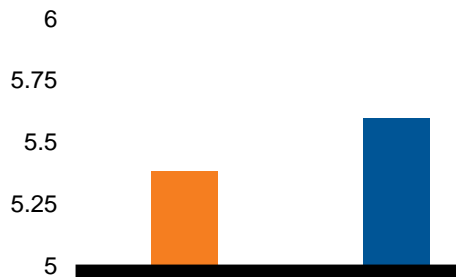
## Sustainability results summary

In addition to meeting risk and return objectives, the Strategy is also successful in consistently improving the aggregate ESG score, carbon emissions, reserves, and green energy exposure to the targeted levels. Below we report the average ESG outcomes of the low carbon ESG Strategy relative to benchmark through the testing period.

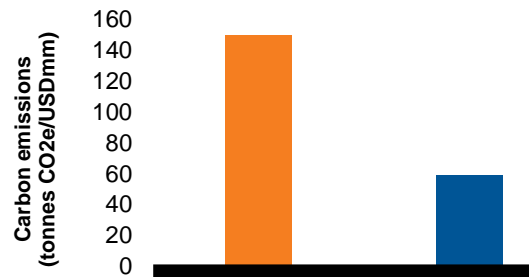
\*No application monies are currently being sought and investors cannot currently apply for units in the Russell Investments Sustainable Global Shares Fund or the Russell Investments Hedged Sustainable Global Shares Fund. If an offer of units is made, it will be made in accordance with the Financial Markets Conduct Act 2013.

## Carbon and ESG outcomes

### ESG Score



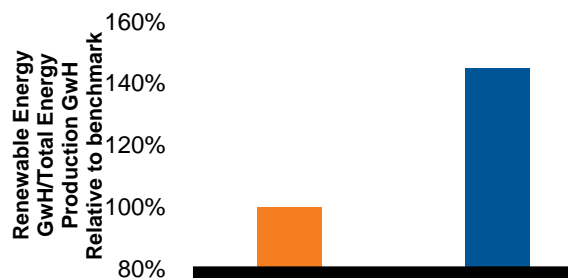
### Carbon emissions



### Fossil fuel reserves



### Green energy ratio



MSCI ACWI

Russell Investments Sustainable Global Shares Fund\*

Source: Russell Investments, MSCI, as at 31 October 2021. Simulated data is presented for illustrative purposes only and is not necessarily a guide to future performance.

## Conclusion

As outlined in the Montreal Pledge and the Portfolio Decarbonisation Coalition, the decarbonisation initiative looks to “mobilise a critical mass of institutional investors committed to gradually decarbonising their portfolios” in the ‘financial economy’ that will help facilitate and incentivise decarbonisation of the ‘real economy’.<sup>11 12</sup> To this end, we argue that decarbonisation portfolios can and should go beyond just carbon reduction to incorporate a broader sustainable development, including exposure to renewable sources of energy and responsible business practices in support of a more sustainable ‘real economy’. Further, we seek to enable investors to meet goals of positively positioning their portfolios to the potential effects of the energy transition without changing their investment objectives.

The Russell Investments Sustainable Global Shares Fund\* demonstrates our commitment to developing solutions which incorporate climate change into a portfolio.. We maintain an active research agenda on these topics with the goal of continuously fine-tuning our knowledge base and evolving our approach. Since first releasing our research on decarbonisation, we introduced our new Material ESG score<sup>13</sup> and investigated the efficacy of adding broader criteria for resource efficiency such as water intensity metrics.<sup>14</sup>

In addition to ongoing research, there is also an ongoing evolution in industry practices and frameworks. Most recently, these have included the EU Climate Benchmarks and the IIGCC’s Net Zero Investment Framework. Both of these frameworks highlight the need to reduce carbon emissions while simultaneously staying invested in high stakes sectors, and in particular increasing investment in climate change solutions. We look forward to the opportunity to enhance our alignment to these frameworks as the data develops.

<sup>11</sup> “Portfolio Carbon. Measuring, disclosing and managing the carbon intensity of investments and investment portfolios.” UNEP Finance Initiative Investor Briefing. (2013).

<sup>12</sup> “The Portfolio Decarbonisation Coalition, Mobilising financial markets to catalyse economic decarbonisation”. UNEP Finance Initiative. (2014).

<sup>13</sup> Bennett, S. & Steinbarth, E. (February 2018). Materiality Matters: Targeting the ESG issues that can impact performance – the material ESG score. Russell Investments Research.

<sup>14</sup> Steinbarth, E. (May 2019). From black to blue: Moving the climate focus beyond carbon and on to water. Russell Investments Research.

\*No application monies are currently being sought and investors cannot currently apply for units in the Russell Investments Sustainable Global Shares Fund or the Russell Investments Hedged Sustainable Global Shares Fund. If an offer of units is made, it will be made in accordance with the Financial Markets Conduct Act 2013.



---

As data quality improves and new concepts and challenges arise, we believe that these strategies will need to evolve and adapt accordingly. Russell Investments is committed to enhancing our approach in line with these developments and actively engaging the investment community in this area. While we have conviction that our Decarbonisation 2.0 approach has taken us further, we are cognisant that as data availability continues to evolve, we will undoubtedly be able to do better. This commitment to research and strategy evolution is at the heart of our approach to sustainable investing for the energy transition.

## Appendix A: Active risk

Tracking error is a measure that we utilise for monitoring the portfolio, but it is not explicitly targeted in the optimisation. There are a number of reasons why we do not target tracking error as our measure of active risk in the optimisation process.

By incorporating a “minimise active risk” objective it would introduce an additional dimension to the portfolio which is the co-variance matrix of the risk model. Thus, differences in individual security weights are driven not just by CO2 emissions but also by their covariance. This can result in two securities with the same CO2 emissions having opposing active positions (i.e. same carbon emissions but directionally different positions). For example, we often see risk model-based optimisations with solutions that have large underweights across the energy sector (e.g. Shell, Total and Chevron etc.) and a single large offsetting position in one energy company (e.g. Exxon Mobil). These positions are driven primarily by the stocks’ co-variance driven by their return and risk characteristics as opposed to their carbon emissions; we don’t believe that a strategy that holds a large position in ExxonMobil (for example) is the desired intent of a decarbonisation Strategy.

The underlying risk models that provide the co-variance matrix and subsequent tracking error can be very unstable over time. This can lead to dramatic changes in the portfolio despite no changes in the underlying carbon emissions characteristic.

As this Strategy explicitly targets a low carbon emissions, to the degree that this factor is uncorrelated with other risk model factors, the risk model treats the reduction in aggregate carbon emissions as risk-free. This can result in the under-prediction of tracking error and is referred to as the alignment problem in Ceria, Saxena and Stubbs (2012).

We control tracking error (active risk) by ensuring that we have the highest possible commonality with the underlying benchmark (i.e. lowest possible active share). We further minimise the tracking error through conservative asset, sector, industry and country constraints. These pragmatic constraints help confirm that the Strategy delivers consistently low tracking error and that our forecasted tracking error is very close to the realised tracking error.

## About Russell Investments

Russell Investments is a global asset manager with a unique set of capabilities that we believe is essential to managing your total portfolio and to meeting your desired outcome. At Russell Investments, we stand with you, whether you're an institutional investor, a financial adviser, or an individual guided by an advisor's personalised advice. We believe the best way to reach your desired outcomes is with a multi-asset approach that combines asset allocation, capital markets insights, factor exposures, manager research and portfolio implementation.

### For more information

Contact us on **+09 357 6633** or visit [russellinvestments.co.nz](https://russellinvestments.co.nz)

### Important Information:

This document is provided by Russell Investment Group Ltd (Russell Investments) in good faith and is designed as a summary to accompany the Product Disclosure Statement for the Russell Investment Funds (Funds). The Product Disclosure Statement is available from Russell Investments, or the issuer of the Funds, Implemented Investment Solutions Limited (IIS), and on <https://disclose-register.companiesoffice.govt.nz/>. The information contained in this document is not an offer of units in the Fund or a proposal or an invitation to make an offer to sell, or a recommendation to subscribe for or purchase, any units in the Fund. If you are making an investment directly then you will be required to complete the application form, which can be obtained from the issuer. The information and any opinions in this document are based on sources that Russell Investments believes are reliable and accurate. Russell Investments, its directors, officers and employees make no representations or warranties of any kind as to the accuracy or completeness of the information contained in this document and disclaim liability for any loss, damage, cost or expense that may arise from any reliance on the information or any opinions, conclusions or recommendations contained in it, whether that loss or damage is caused by any fault or negligence on the part of Russell Investments, or otherwise, except for any statutory liability which cannot be excluded. All opinions reflect Russell Investments' judgment on the date of this document and are subject to change without notice. This disclaimer extends to IIS, and any entity that may distribute this publication. The information in this document is not intended to be financial advice for the purposes of the Financial Markets Conduct Act 2013. In particular, in preparing this document, Russell Investments did not take into account the investment objectives, financial situation and particular needs of any particular person. Professional investment advice from an appropriately qualified adviser should be taken before making any investment. Past performance is not necessarily indicative of future performance, unit prices may go down as well as up and an investor in the fund may not recover the full amount the capital that they invest. No part of this document may be reproduced without the permission of Russell Investments or IIS. IIS is the issuer and manager of the Russell Investments Funds. Russell Investments is the investment manager of the Russell Investment Funds. Russell Investments' ownership is composed of a majority stake held by funds managed by TA Associates, with a significant minority stake held by funds managed by Reverence Capital Partners. Russell Investments' employees and Hamilton Lane Advisors, LLC also hold minority, non-controlling, ownership stakes.

Copyright © 2021 Russell Investments. All rights reserved. This material is proprietary and may not be reproduced, transferred, or distributed in any form without prior written permission from Russell Investments.